



NEWS » LIFESTYLE » SNOWLESS WINTER: ANALYSING THE ROLE OF DEFORESTATION IN THIS YEAR'S WEATHER ANOMALIES

2-MIN READ

Snowless Winter: Analysing The Role Of Deforestation In This Year's Weather Anomalies

Curated By: [Lifestyle Desk](#) [News18.com](#) Last Updated: FEBRUARY 26, 2024, 13:16 IST [New Delhi, India](#)



Gulmarg is a popular skiing destination in Jammu and Kashmir. (Photo Credits: Instagram)

Reports indicate a nearly 30% decrease in snowfall compared to the previous decade, highlighting a worrisome long-term trend

Follow us: [Whatsapp](#) [Facebook](#) [Twitter](#) [Telegram](#) [Google News](#)

This past winter, the delay of snowfall in the Himalayas has painted a concerning picture. Reports indicate a nearly 30% decrease in snowfall compared to the previous decade, highlighting a worrisome long-term trend. Such deviations from historical patterns pose significant threats to both the economy and ecology of the region.

THE DELAY OF SNOWFALL AFFECTING DAILY LIFE AND LIVELIHOOD

Pradip Shah, co-founder, Grow-Trees.com, says, "The melting of glaciers not only affects water resources but also disrupts various industries such as agriculture and electricity generation. Many resorts that depend on skiing and similar activities are apprehending a serious blow if the dry spell continues any longer."

THE LINK BETWEEN DEFORESTATION AND SNOWLESS WINTERS

The World Meteorological Organisation (WMO) has declared 2023 to be the warmest year on record. While various factors contribute to weather patterns, the escalating frequency of such anomalies can ultimately be attributed to deforestation. "Forests act as nature's air conditioners, regulating temperature and influencing precipitation patterns. Trees transpire, releasing water vapour into the atmosphere, which condenses to form clouds and evapotranspiration and ultimately, reduced snowfall," adds Shah.

THE NEED FOR COLLECTIVE EFFORTS TO ADDRESS DEFORESTATION

RELATED STORIES

Summer Essentials: A Symphony of Style, Craftsmanship and

Kim Kardashian To Kriti Sanon, Actresses Who Aced The 'Grunge To Glam' Fashion Look






How To Exfoliate Well: What Is The Best Exfoliating Routine?...

Nayanthara's Citrine Ekaya Banaras Saree: A Modern Take On Sridevi's Iconic Yellow Lace Saree

Be Inspi Fashion

COMM UNDE

LATEST NEWS

-  Meet A Farmer Village
 -  Why M Soake
 -  How M 8th Ra Exams
 -  Surrea 'Very C Game'
 -  Relian Grows Core,
- [MORE LA](#)

LIVE TV



Listen to the latest songs only on JioSaavn.com

environmental degradation. By actively involving local communities and leveraging their expertise, this initiative has not only replenished lost green cover but has also generated significant socio-economic benefits for the region," shares Shah. Through collaborative endeavours, individuals are empowered to make a tangible difference in preserving our planet's precious ecosystems.

BALANCING WINTER WEATHER PATTERNS

Beyond afforestation, mitigating climate change through reduced carbon emissions is essential. This requires a global shift towards renewable energy sources and adopting sustainable practices in all sectors. Efforts to restore and preserve forest ecosystems must also be prioritised. Sustainable land management practices, such as agroforestry and sustainable logging techniques, can help mitigate the adverse effects of deforestation on weather patterns.

Shah explains, "Addressing climate change is paramount in ensuring more stable winter weather conditions. This entails reducing greenhouse gas emissions by transitioning to renewable energy sources, promoting energy efficiency measures, and implementing policies that incentivise sustainable practices across industries."

Investing in research and technology to better understand and predict weather patterns can also aid in adapting to and mitigating the impacts of changing winter conditions. This includes improving meteorological forecasting models and investing in infrastructure to better manage water resources in regions reliant on snowmelt for freshwater supply.

You May Like

Piramal Mahalaxmi Located at the Heart of South Mumbai

Piramal Mahalaxmi

-30%

Palr

Horoscope



Today Weekly

Ar
Ganesha says to mixed day of resu spend a lot of listening to the

Read

Top Videos

Sponsored Links by Taboola

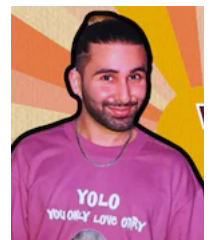
[View All](#)

[Learn More](#)

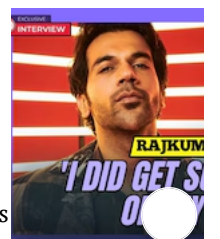
TRENDING VIDEOS



Manoj Bajpayee Goes E About Iran-Israel War &



Rory Tried His Hand At And The 'vaatavaran' G



Rajkumar Rao Gets C Rumours, His Wife Patr

April 22, 2024, 14:04 IST

Suhana Khan's Italy Vacay Diaries Boasts Of The Chicest Outfits Complete With Varsity Jackets & Caps

April 21, 2024, 19:04 IST

Shakira, Lana Del Ray, Doja Cat & Ice Spice Go Sexy & Sheer At Coachella 2024 | Fashion Trend Alert

April 18, 2024, 18:04 IST

Malaika Arora, Alaya F, Shilpa Shetty, Disha Patani's Summertime Workout Plan Needs To Be Bookmarked

April 18, 2024, 16:04 IST

Nike Faces Severe Backlash For Making Skimpy Uniforms For US Women's Track Olympic Team | EXPLAINED

April 18, 2024, 12:04 IST

5 Beauty Trends That Need To Try In 2024; Hair, Red Lips, Metal So Much More

Swipe Left For Next Video

Shah opines, "Lastly, fostering international cooperation and collective action is crucial in tackling the root causes of winter weather anomalies. By working together on a global scale, nations can share knowledge, resources, and best practices to address deforestation, climate change, and their interconnected impacts on winter weather patterns. Only through concerted efforts can we hope to achieve a more sustainable and resilient future for our planet's ecosystems and the communities that depend on them."



« PREVIOUS

Kim Kardashian To Kriti Sanon, Actresses Who Aced The 'Grunge To Glam' Fashion Look

NEXT »

Nayanthara's Citrine Ekaya Banaras Saree: A Modern Take On Sridevi's Iconic Yellow Lace Saree



LATEST BLOGS



IPL Ma Score | Indian